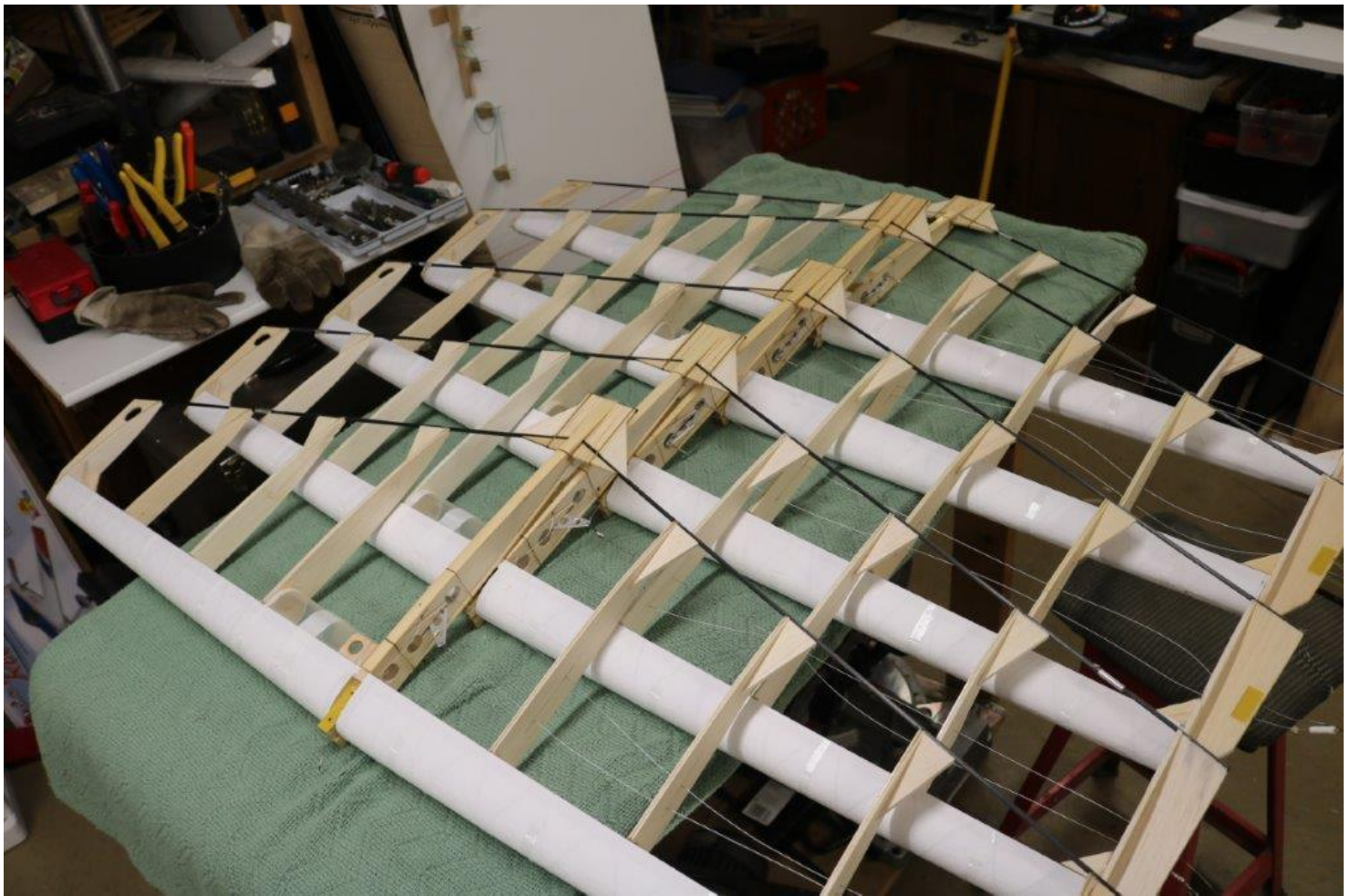




*Now Celebrating our 32nd year of Publication*



**Brian Stas Good Friend and True Ambassador for our sport is in full rebuild mode as opening day moves closer. More photos throughout this issue. The man is a craftsman.**

## Proposed 2022 Schedule

place and there may well be changes and adjustments.

			GX	Saugus, MA
15-May	Sunday	Spring Championships	GX	Kingston, MA
5-Jun	Sunday	F2D Shootout	F2D Fast	Saugus, MA
26-Jun	Sunday	Summer Sizzler	GX	Kingston, MA
17-23	July	2022 Nats CL Combat		Muncie, Indiana
7-Aug	Sunday	Central Mass Championships	GX	E. Brookfield, MA
21-Aug	Sunday	Silver Lake Shootout	GX	Kingston, MA
11-Sep	Sunday	Eastern Mass Invitational	GX	location TBD
25-Sep	Sunday	Fall Finale Combat Tournament	GX	location TBD
9-Oct	Sunday	Eastern Mass Championship	GX	location TBD
23-Oct	Sunday	Fall Championship	GX	location TBD
6-Nov	Sunday	Turkey Day Shootout	GX	location TBD

### *Rumors, Facts Etc.*

**2022 SCHEDULE:** Brian and Chris will work on securing permissions for the first half of the schedule and where a location is listed we are reasonably sure it will come to fruition. We will worry about the permissions starting in September a little later and or as the season progresses. We will move ahead with scheduling an F2D Fast on June 5th in Saugus. Most of the events will be GX as listed however if turnout warrants we may do a second F2D Fast in the Fall. Opening day is now Saturday May 7th in Saugus (GX Combat). I managed to have it scheduled for Easter Sunday April 17th. Worst screw-up since Gerry and I managed to schedule an event for Mother's Day back in the 1990s, We caught "hell" for that one.

**CONTEST FUND:** No change since the last issue

**HOG HEAVEN HOBBIES:** John Glennon owner of Hog Heaven Hobbies has been very supportive of our group for many years now. As you know we have gone to gift certificates from Hog Heaven as prizes. Please know John has seen fit to give our group a discount on those gift certificates that is substantial. That money goes into the contest fund labeled as a donation from John. He obviously is losing money on these transactions both out of pocket and in lost profit so please support his shop for your hobby needs whenever possible.



Thank you for using  
PDF Complete.  
Please Activate  
your software or ...

Click Here to purchase  
full featured PDF Complete products

not to make a profit, but rather, to promote control line combat in New England. It is in New England combat contests or who support these contests through donations to you if you can accept an email attachment and it is available as a free download from people who do not meet the above criterion. If you have information you would like

PODUNK ROAD EAST BROOKFIELD, MA 01515  
-0679 E-MAIL: podunk129@charter.net

make the check payable to NEIL SIMPSON .....Donations go into the New England Contest Fund and are used to cover the cost of running New England control line combat contests. IF YOU WANT TO RUN A CONTROL LINE COMBAT CONTEST IN NEW ENGLAND AND YOU NEED HELP (FINANCIAL OR OTHERWISE) CALL OR WRITE NEW ENGLAND COMBAT NEWS. We want to continue to help make New England a "Hot Spot" for control line combat. New England Combat News is your newsletter-USE IT. Control line combat is your sport-PROMOTE IT.

## THE COREHOUSE

34 SWEET ARROW DRIVE  
HUMMELSTOWN, PA 17036  
(717) 566-3810 6-10 pm est  
PHIL CARTIER

PHIL IS THE COMBAT FLYER'S SOURCE FOR FOAM CORES  
A QUALITY PRODUCT AT A FAIR PRICE.

CORES SOLD IN FOUR PAIR SETS

ALSO FOAMY COMBAT KITS INCLUDING  
THE LIL HACKER  
THE GOTCHA STREAK III

SPEED LIMIT AND F2D FOAMIE COMBAT SHIPS

ALSO SPECIALITY ITEMS INCLUDING  
BLADDER SUPPLIES AND COMPOSITE TUBES

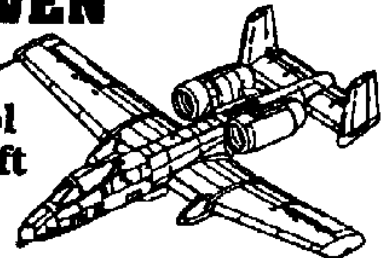
CALL FOR LATEST PRICING  
AND ADDITIONAL INFO

New England  
Combat News  
Website

[www.homestead.com/necn](http://www.homestead.com/necn)

## HOG HEAVEN HOBBIES

Radio Control  
Model Aircraft  
& Supplies



494 Main Street  
Sturbridge, MA, 01518

[www.hogheavenhobbies.com](http://www.hogheavenhobbies.com)

John Glennon

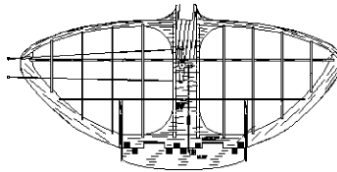
(508) 347-9350



Thank you for using  
PDF Complete.  
Please Activate  
your software or ...

Click Here to purchase  
full featured PDF Complete products

## OWNER'S CONTROL LINE PLANS



6711 Quincy Ave  
Lubbock, TX 79424

[www.controllineplans.com](http://www.controllineplans.com)  
[bobbydmears@aol.com](mailto:bobbydmears@aol.com)

### GRW Products

21899 Heliotrope Lane  
Wildomar, CA 92595  
Phone: (951) 678-1406

**E-Mail: [GRW@RSMDistribution.com](mailto:GRW@RSMDistribution.com)**

**Owner: Eric Rule**

Combat or Profile Stunt Hopper Tanks  
Profile Standard Vent, Profile UNIFLO Vent  
Built-Up Fuselage Slide in Style  
Built-Up Fuselage Uniflo Vent



**MACA APPLICATION AND RENEWAL FORM**  
mail to : MACA, c/o ARLENE PYLES, 6711 Quincy Ave, Lubbock, TX 79424  
(Please write your AMA Number on your Check.)

Name \_\_\_\_\_ Date \_\_\_\_\_

AMA Number \_\_\_\_\_ AMA Category JR. [ ] ; SR. [ ] ; OP. [ ] ; CD. [ ] ; Other - \_\_\_\_\_

Address \_\_\_\_\_ Telephone (\_\_\_\_) \_\_\_\_\_

City \_\_\_\_\_ State \_\_\_\_\_ Zip Plus Four \_\_\_\_\_ - \_\_\_\_\_

E-Mail Address \_\_\_\_\_ Forum login name \_\_\_\_\_

Birth Date \_\_\_\_\_ Male [ ] Female [ ] Competition Flyer [ ] Sport Flyer [ ] Non Flyer [ ]

Club/ Clubs Affiliation \_\_\_\_\_

Please rate your preference of flying 1 through 10 with 1 being most preferred.

Combat: 1/2A [ ], Fast [ ], Slow [ ], Super Slow [ ], FAI [ ]; Stunt [ ]; Racing [ ]; Carrier [ ];  
Speed [ ]; Free Flight [ ]; R/C [ ]; Other [ ]

**ANNUAL DUES: \$ 30.00 (U.S. Funds Only)**

\$ 6.00 for each additional family member at same address (No Newsletter)

**DONATIONS** F2D Pitman Fund \$ \_\_\_\_\_ Other (Specify) \_\_\_\_\_ \$ \_\_\_\_\_

**Be sure to include your forum login name so that you can be granted access to the members section.**

\_\_\_\_\_



the rebuild of several crashed Yuvenko  
E and spars and saved the fuselages. New  
foam L/E from Phil and new spars and front "middle"  
spar. I wrapped the new leading edges with Kevlar string and paper. It  
makes a very strong structure. The leading edge is banded up to a support  
jig, then the fuse is glued in. Trailing edge is glued to the wing tips  
and the remaining ribs are glued to the L/E. Light sanding and replacement



